



Regional Training Course on Fish Larvae

SEAFDEC Training Department, Samut Prakan, Thailand

on 16 Nov – 3 Dec 2022.

Species Identification and Morphological Descriptions of Examined Larvae and Juvenile

Ms. Sophasith THAMMABOUD ¹

Ms. Nokjaliya PHOUSAVANH ²

¹ National Fisheries Development Center, Department of Livestock and Fisheries (DLF)

² Living Aquatic Resources Research Center (LARReC)

Outline

A large blue arrow pointing downwards from the 'Outline' box to the list of topics.

1. **Scombridae Larvae.**
2. **Carangidae Larvae.**
3. **Engraulidae Larvae.**
4. **Siganidae Larvae.**

1. Scombridae Larvae



Measurement (mm)

- Body length : 4.35 mm
- Body depth : 1.33 mm (30.5% BL)
- Body depth moderate
- Eye diameter : 0.54 mm
- Head length : 1.51 mm
- Pre-anal length: 2.12 mm
- Pre-dorsal length : 2.06 mm
- Snout length : 0.41 mm



Morphological Description

- Preopercular spine absent
- Pigment present sparsely over brain
- Spots on ventral gut and preanus
- Myomere \approx 31

Family: Scombridae

Tribe: Scombrini

Genus: Rastrelliger

Specie: R.....

2. Carangidae Larvae



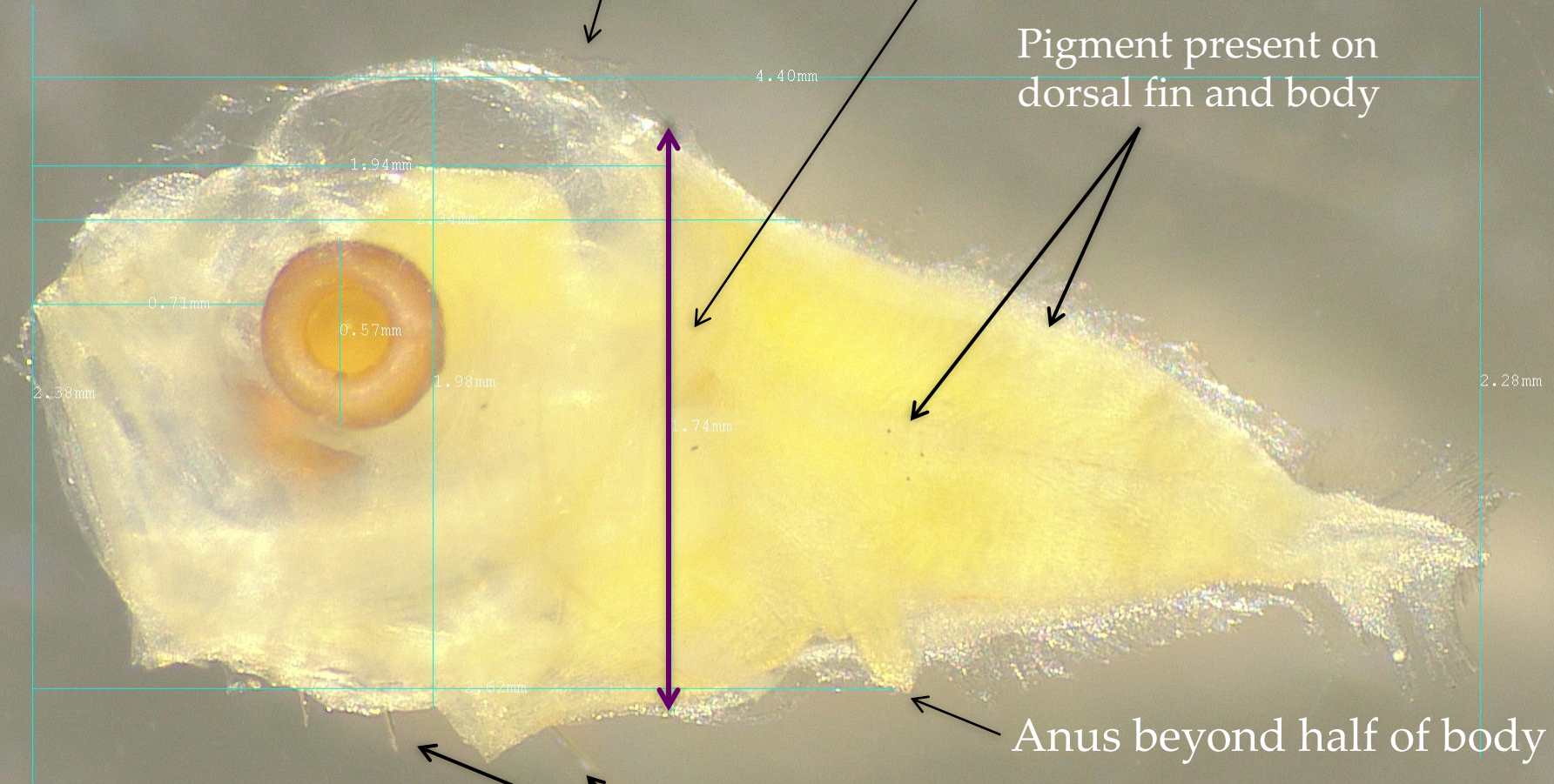
Supraoccipital crest (SOC) present

Body shape deep

Pigment present on dorsal fin and body

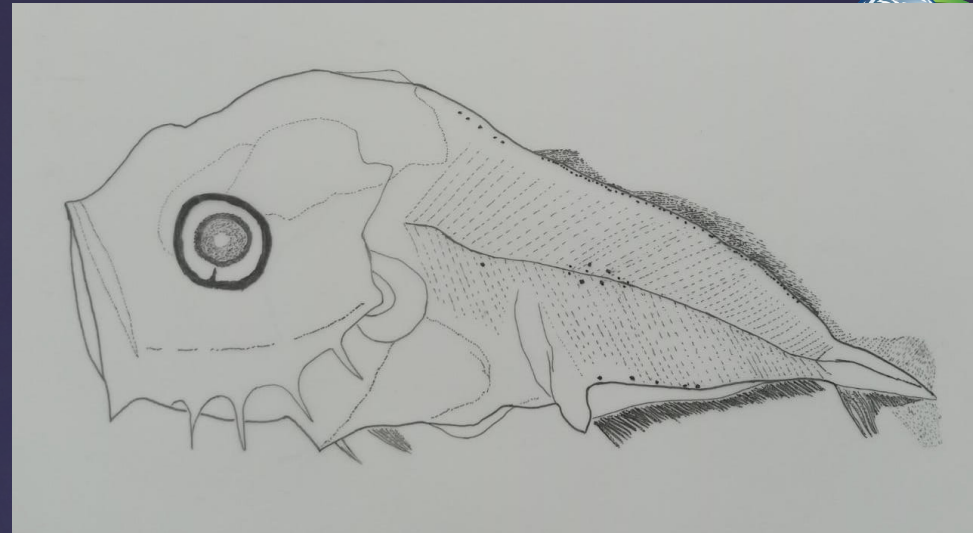
Anus beyond half of body

Preopercular spine at angle is very elongate



Measurement (mm)

- Body length : 4.40 mm
- Body depth : 1.74 mm (39.5% BL)
- Body depth moderate
- Eye diameter : 0.57 mm
- Head length : 1.94 mm
- Pre-anal length: 2.62 mm
- Pre-dorsal length : 2.34 mm
- Snout length : 0.71 mm

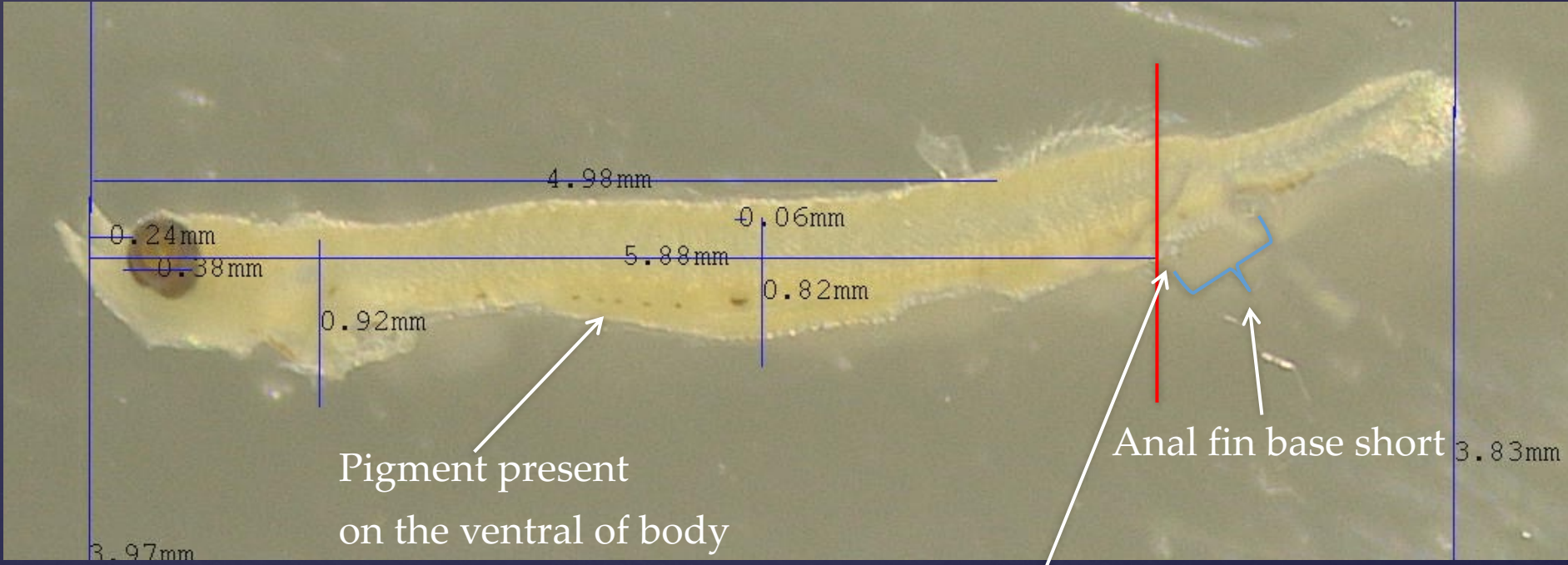


Family: Carangidae
Tribe: Carangini
Genus: Gnathanodon
Specie: *G. speciosus*

Morphological Description

- Supraoccipital crest (SOC) present
- Body shape deep
- Pigment present on dorsal fin and body
- Preopercular spine elongate
- Anus beyond half of body

3. Engraulidae Larvae



Pigment present on the ventral of body

Origin of anal fin just under end of dorsal fin

Anal fin base short

3.97mm

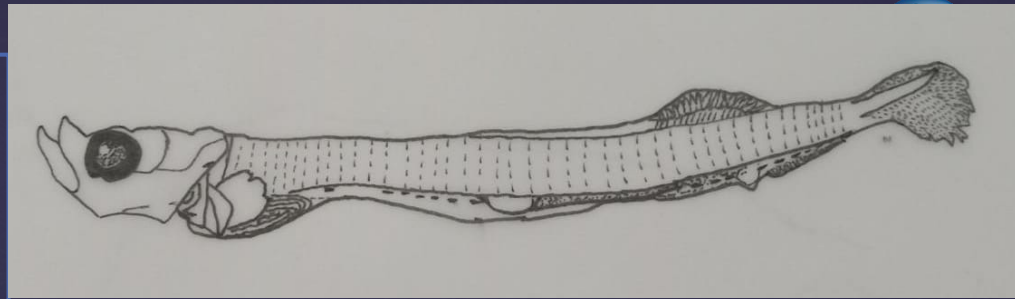
3.83mm

Measurement (mm)

- Body length : 7.56 mm
- Body depth : 0.82 mm (10.85%BL)

Body elongate

- Eye diameter : 0.38 mm
- Head length : 0.92 mm
- Pre-anal length: 5.88 mm
- Pre-dorsal length : 4.98 mm
- Snout length : 0.24 mm



Family: Engraulidae

Genus: Encrasicholina

Specie: *E. punctifer*

Morphological Description

- Origin of anal fin just under end of dorsal fin
- Anal fin base short
- Pigment present on the ventral of body

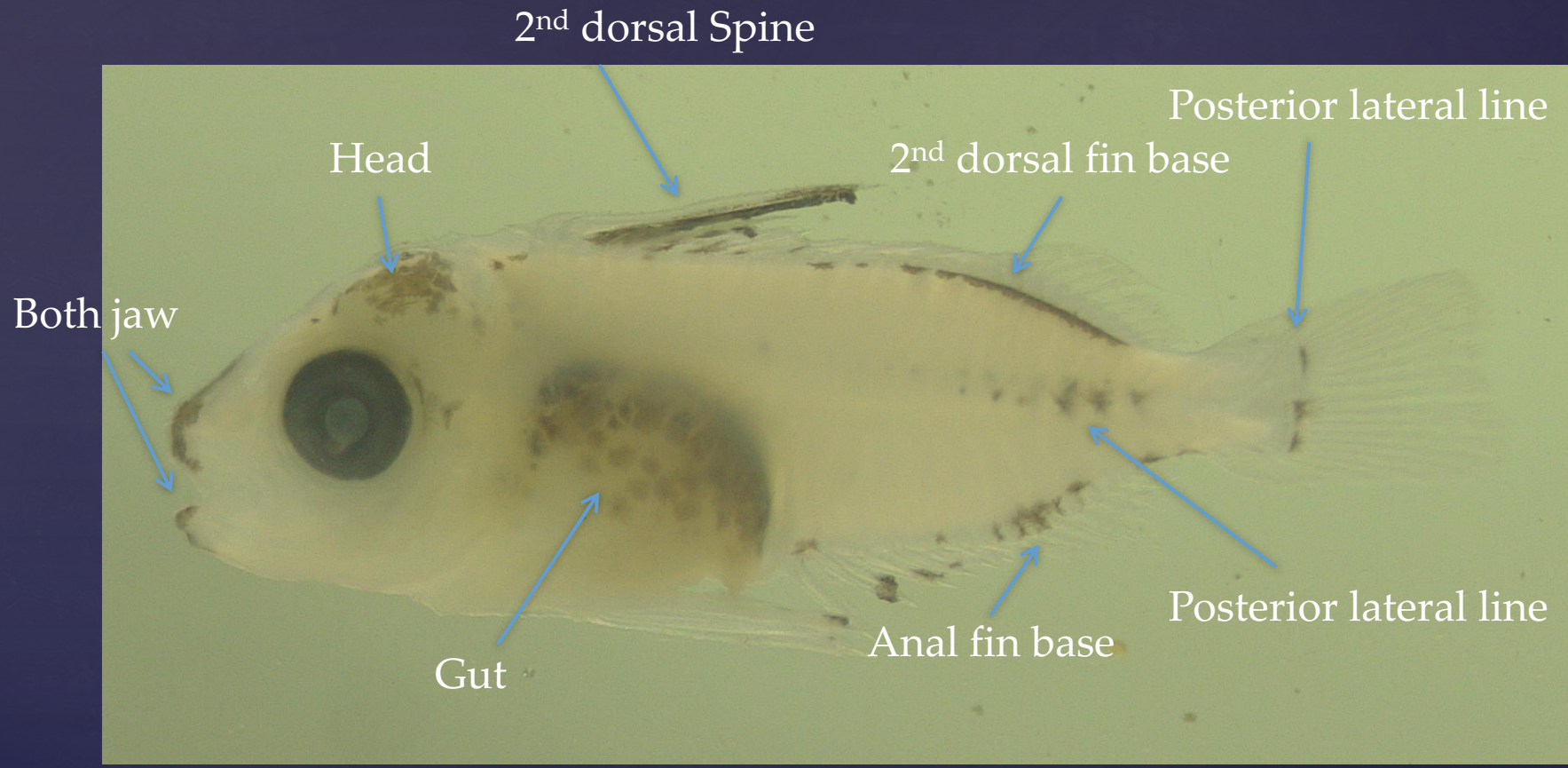


Counting

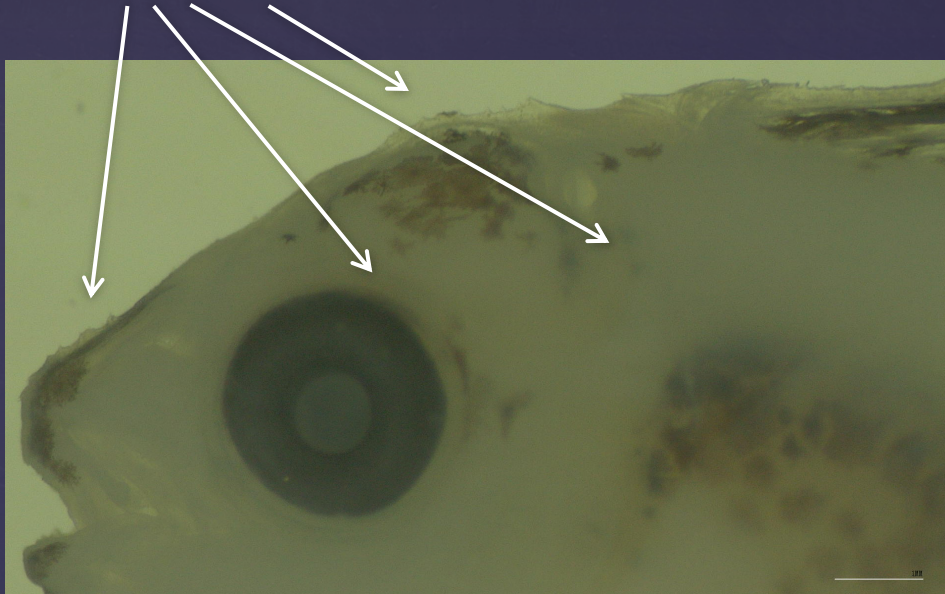
- M = 40-44
- D = 12-14

4. Siganidae Larvae

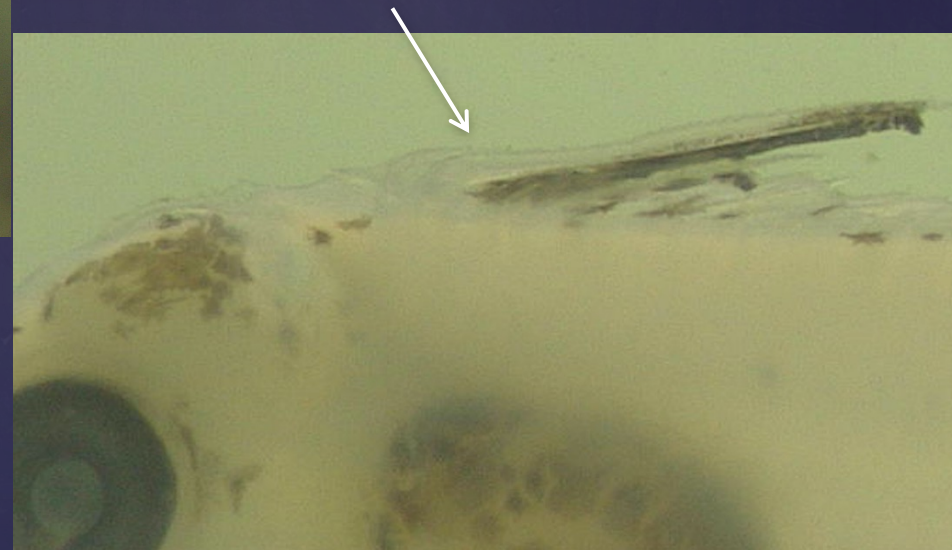
Pigment presented



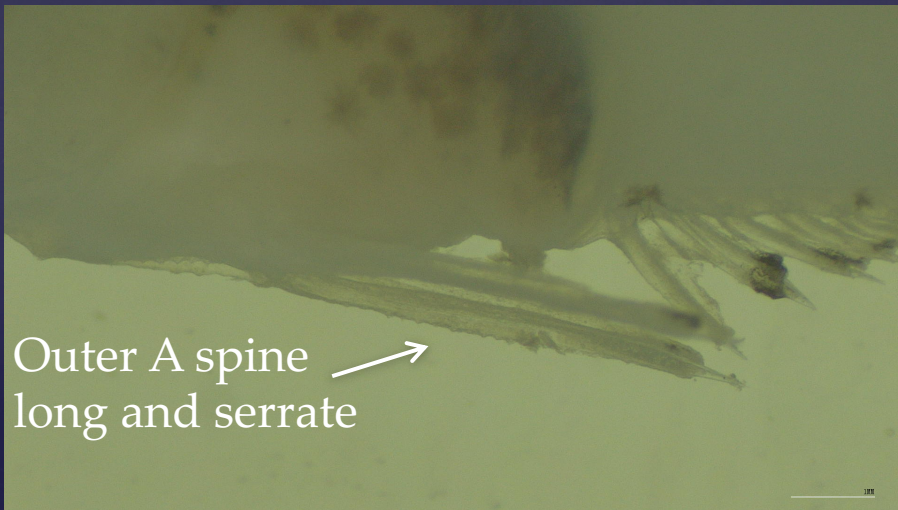
Serrations formed on snout, head, upper eye and operculum



2nd dorsal spine long and serrate

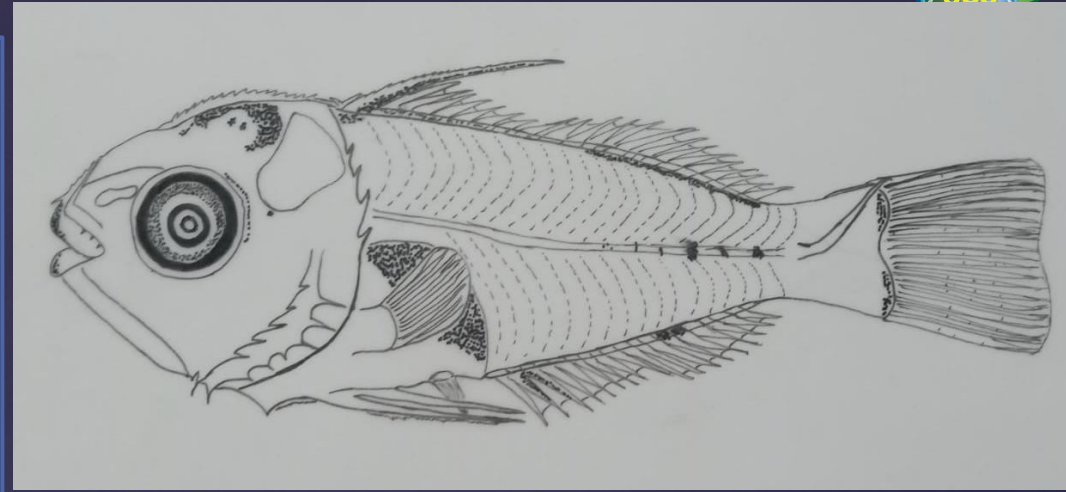


Outer A spine
long and serrate



Measurement (mm)

- Body length : 7.64 mm
- Body depth : 2.36 mm (30.8%BL)
- Body depth moderate
- Eye diameter : 0.87 mm
- Head length : 2.45 mm
- Pre-anal length: 3.99 mm
- Pre-dorsal length : 2.26 mm
- Snout length : 0.78 mm



Family: Siganidae
 Genus: Siganus
 Specie: *S. Guttatus*



Morphological Description

- 2nd dorsal spine long and serrate
- Outer A spine long and serrate
- Serrations formed on snout, head and eye
- Preopercular spines form
- Pigment develop

Counting

- D = 20
- A = 16-17

ຂອບໃຈ (Khop jai)

Thank you for your attention.

